



## 26 SWINTON STREET WC1X 9NX

£2,300 PCM

A bright two double bedroom (No living room) top floor apartment offering two generous double bedrooms, separate kitchen and a tiled shower room.

A few minutes walk from both King's Cross and Bloomsbury. This Victorian conversion is on the third floor on the corner of King's Cross Road and Swinton Street. The Brunswick centre (Waitrose, shops restaurants) is close by.

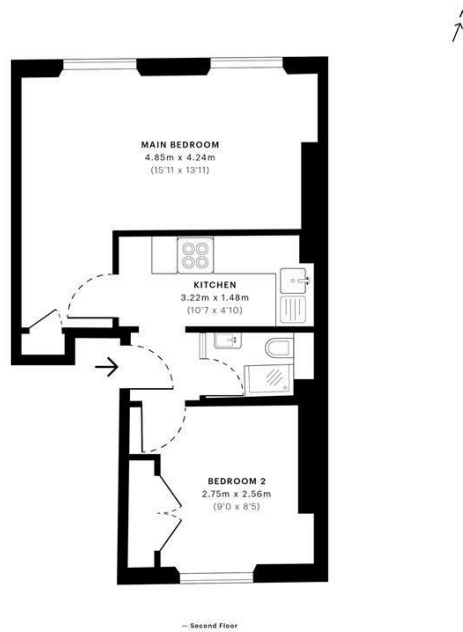
**Hemmingfords**

**Swinton Street, WC1X**

CAPTURE DATE: 24/07/2021 LASER SCAN POINTS: 880,590

GROSS INTERNAL AREA

32.66 sqm / 351.55 sqft



**GROSS INTERNAL AREA (GIA)**  
The footprint of the property  
32.66 sqm / 351.55 sqft

**NET INTERNAL AREA (NIA)**  
Excludes walls and external features  
Includes swimming pools, covered terraces  
30.13 sqm / 324.32 sqft

**EXTERNAL STRUCTURAL FEATURES**  
Balconies, terraces, verandas, etc.  
0.00 sqm / 0.00 sqft

**RESTRICTED HEAD HEIGHT**  
Limited use area under 1.8m  
0.00 sqm / 0.00 sqft

**spec Verified**

**RICS**  
Certified Property Measurement

Spec Verified floor plans are produced in accordance with Royal Institution of Chartered Surveyors' Property Measurement Standards. Plots and gardens are illustrative only and excluded from all area calculations. Due to rounding, numbers may not add up precisely. All measurements shown for the individual room lengths and widths are the maximum points of measurements captured in the scan.

**IPMS RESIDENTIAL** 32.02 sqm / 344.60 sqft  
**IPMS RESIDENTIAL** 30.49 sqm / 328.59 sqft

spec id: 6078376354449092c6b0f85



Energy Efficiency Rating		Current	Potential
Very energy efficient - lower running costs			
(92 plus) <b>A</b>			
(81-91) <b>B</b>			
(69-80) <b>C</b>		70	79
(55-68) <b>D</b>			
(39-54) <b>E</b>			
(21-38) <b>F</b>			
(1-20) <b>G</b>			
Not energy efficient - higher running costs			
<b>England &amp; Wales</b>		EU Directive 2002/91/EC	

Agents Note: Whilst every care has been taken to prepare these particulars, they are for guidance purposes only. All measurements are approximate and are for general guidance purposes only and whilst every care has been taken to ensure their accuracy, they should not be relied upon and potential buyers/tenants are advised to recheck the measurements

Hemmingfords Lettings & Sales  
Second Floor  
34 Upper Street  
London  
N1 0PN

020 3890 7470  
info@hemmingfords.co.uk  
www.hemmingfords.co.uk

**Hemmingfords**